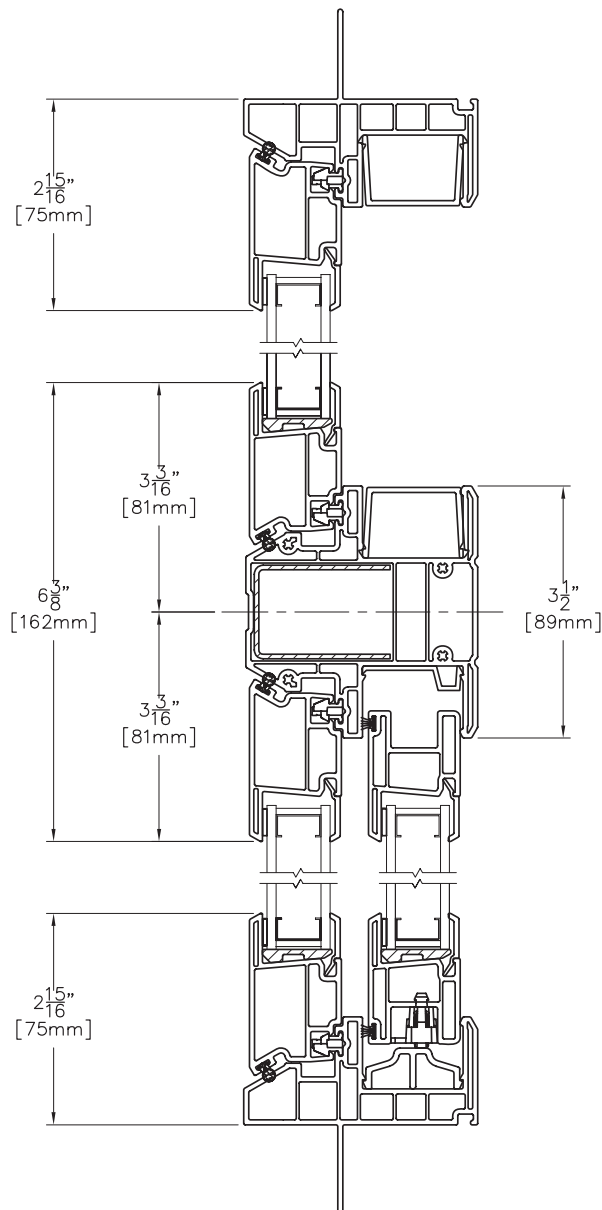


# Assembly Drawing:

IMR 8120 Half Vent Below

**8000T**  
**SERIES**  
**TUSCANY**

*Vertical View*



Scale: 6" = 1' (1/2 scale)

**8000T COMBO-1**  
**NOVEMBER 2008**

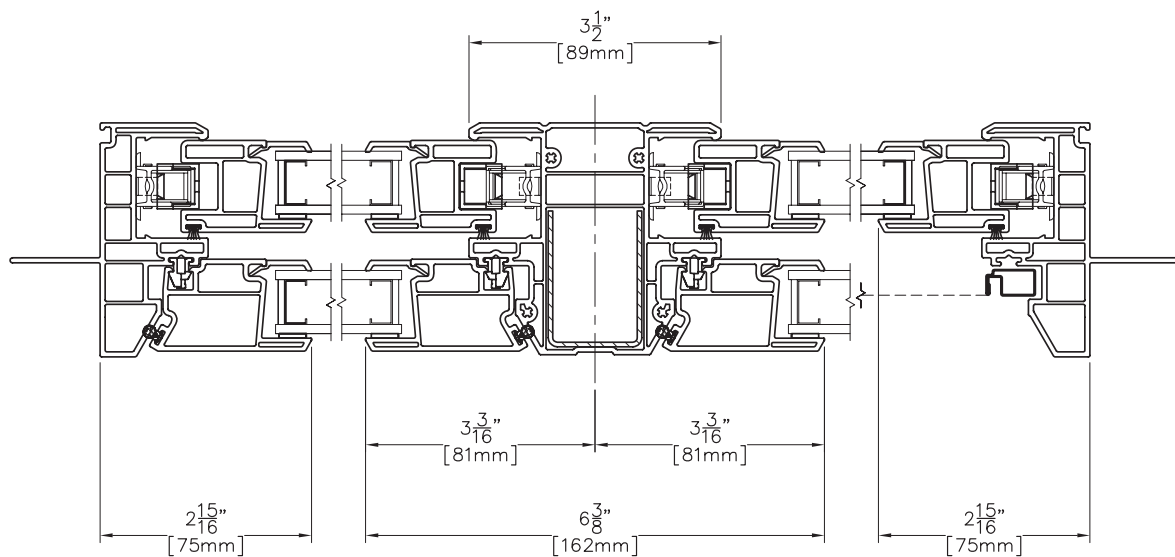
*Due to continual product research and development, details may be changed at any time. ©2008  
Products shown are not available at all locations – confirm availability with your local Milgard representative.*

# Assembly Drawing:

IMR 8220 Double Single Hung

**8000T**  
SERIES  
TUSCANY

*Horizontal View*



Scale:  $6" = 1'$  (1/2 scale)

*Due to continual product research and development, details may be changed at any time. ©2008  
Products shown are not available at all locations – confirm availability with your local Milgard representative.*

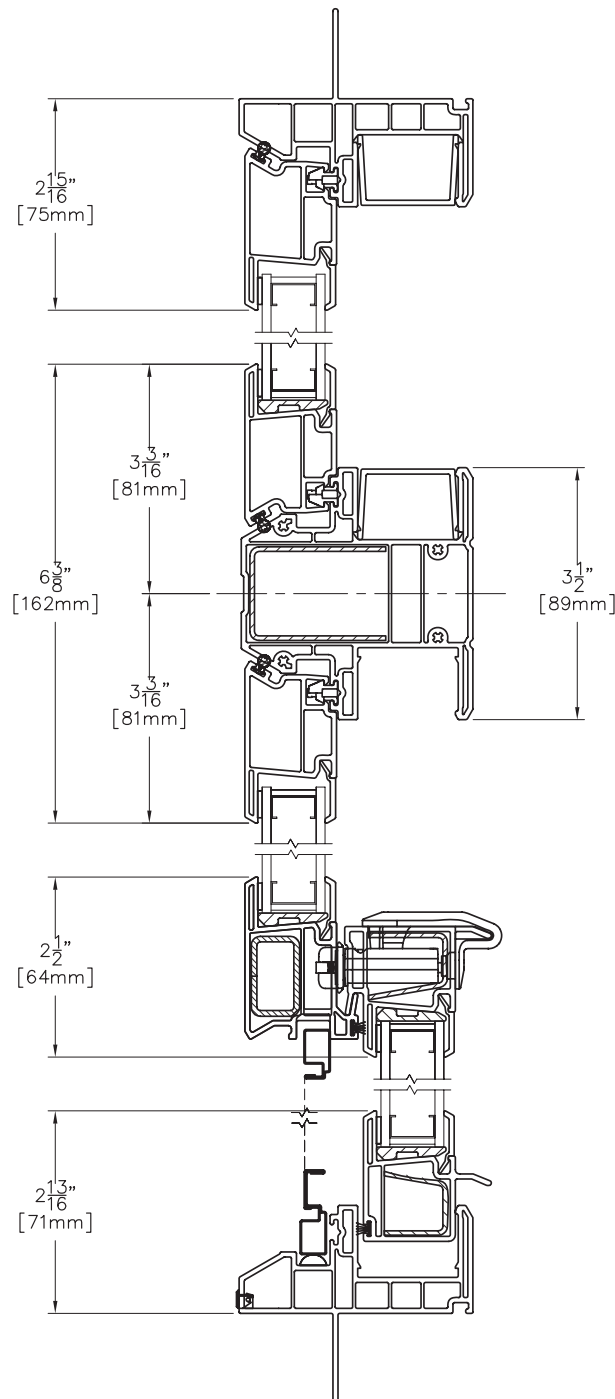
**8000T COMBO-2**  
**NOVEMBER 2008**

# Assembly Drawing:

IMR 8220 Single Hung Below

**8000T**  
SERIES  
TUSCANY

Vertical View



Scale: 6" = 1' (1/2 scale)

8000T COMBO-3  
NOVEMBER 2008

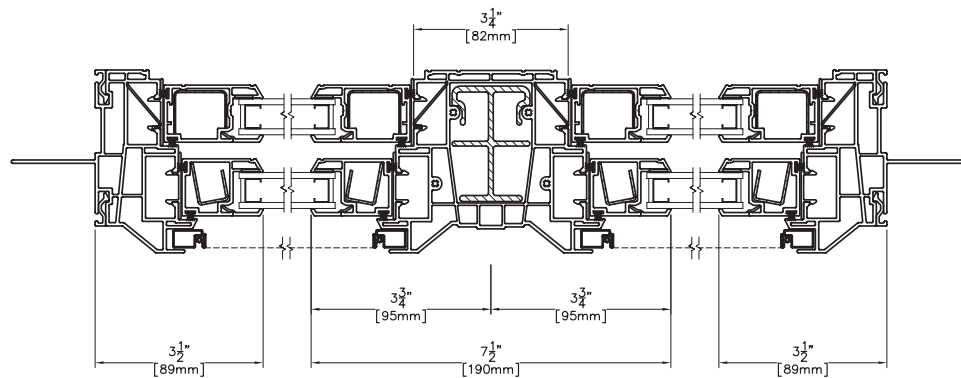
*Due to continual product research and development, details may be changed at any time. ©2008  
Products shown are not available at all locations – confirm availability with your local Milgard representative.*

# Assembly Drawing:

IMR 8225 Double Double Hung

**8000T**  
**SERIES**  
**TUSCANY**

*Horizontal View*



Scale: 6" = 1' (1/2 scale)

*Due to continual product research and development, details may be changed at any time. ©2008  
Products shown are not available at all locations – confirm availability with your local Milgard representative.*

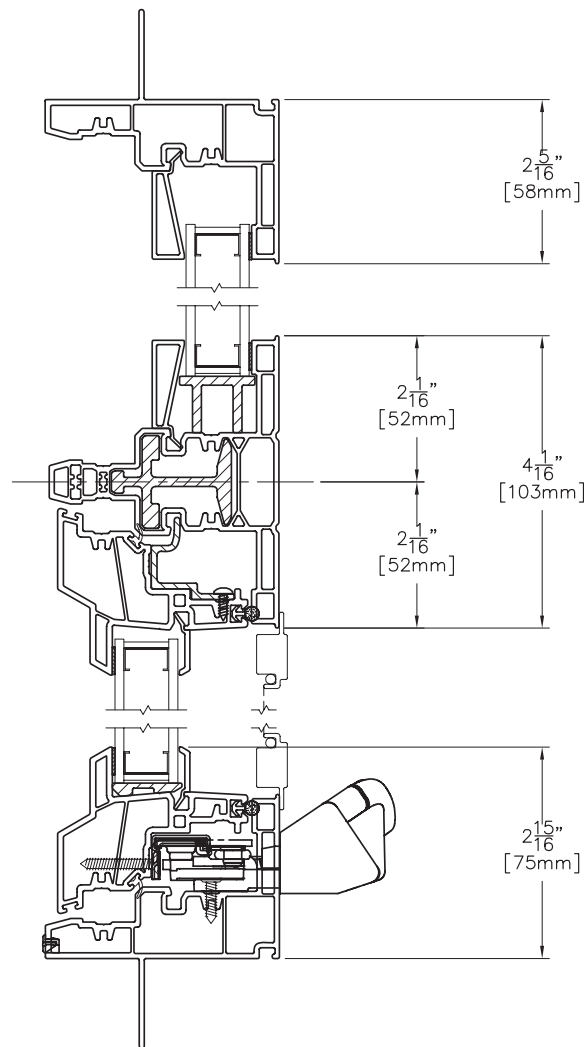
**8000T COMBO-4**  
**NOVEMBER 2008**

# Assembly Drawing:

IMR 8420 Awning Below

**8000T**  
SERIES  
TUSCANY

Vertical View



Scale: 6" = 1' (1/2 scale)

8000T COMBO-5  
NOVEMBER 2008

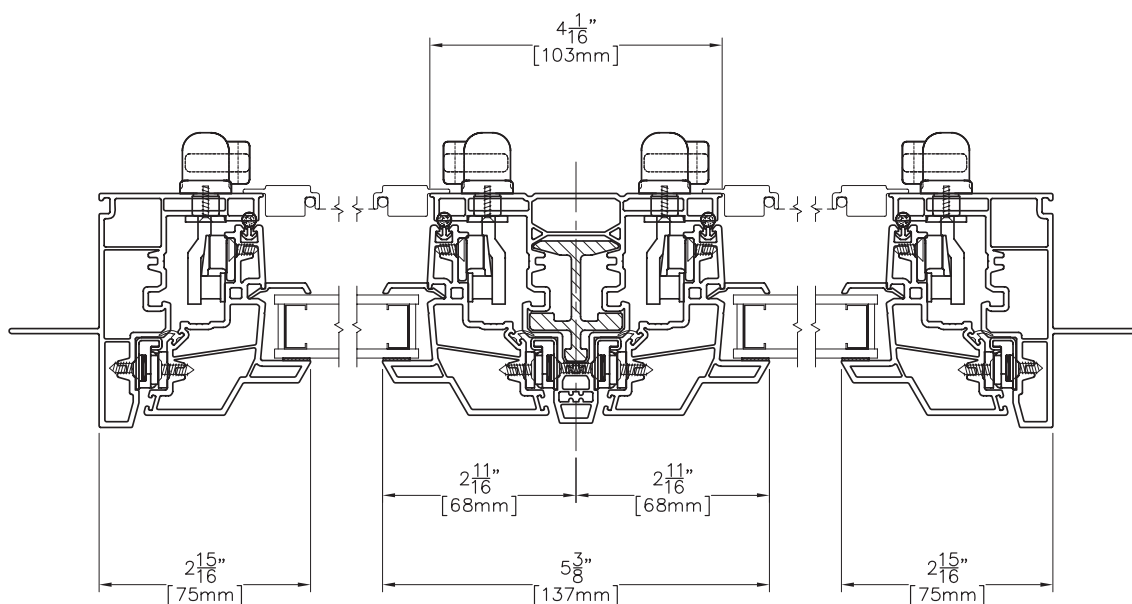
*Due to continual product research and development, details may be changed at any time. ©2008  
Products shown are not available at all locations – confirm availability with your local Milgard representative.*

# Assembly Drawing:

IMR 8420 Double Awning

**8000T**  
SERIES  
TUSCANY

Horizontal View



Scale: 6" = 1' (1/2 scale)

Due to continual product research and development, details may be changed at any time. ©2008  
Products shown are not available at all locations – confirm availability with your local Milgard representative.

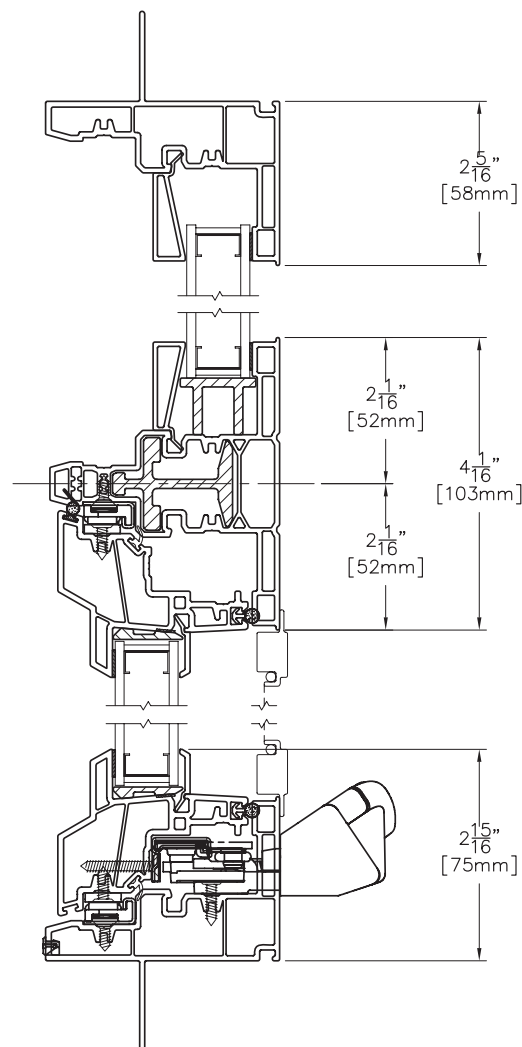
8000T COMBO-6  
NOVEMBER 2008

# Assembly Drawing:

IMR 8520 Casement Below

**8000T**  
**SERIES**  
**TUSCANY**

*Vertical View*



Scale: 6" = 1' (1/2 scale)

8000T COMBO-7  
NOVEMBER 2008

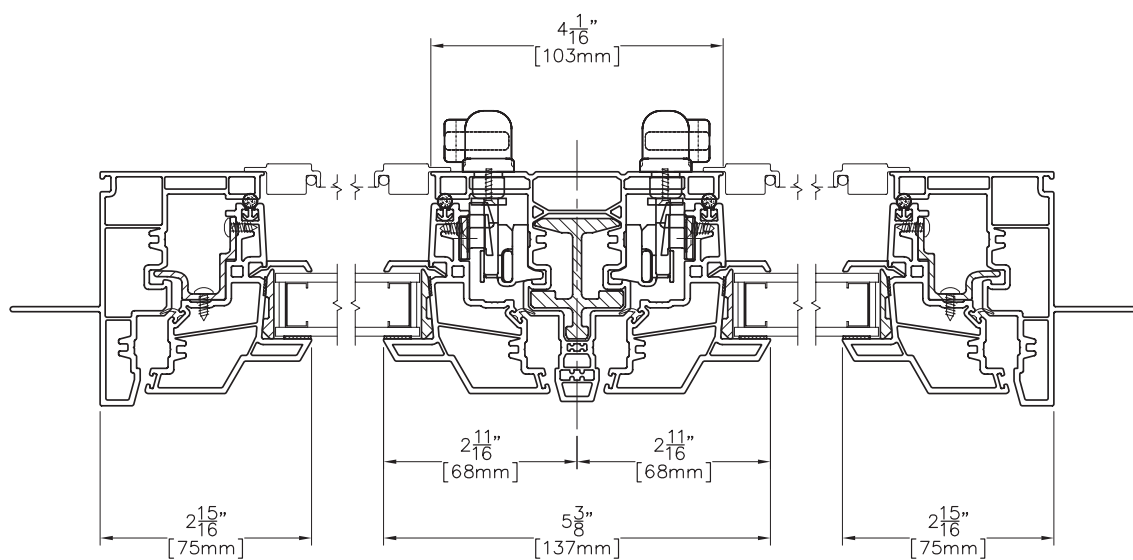
*Due to continual product research and development, details may be changed at any time. ©2008  
Products shown are not available at all locations – confirm availability with your local Milgard representative.*

# Assembly Drawing:

IMR 8520 Double Casement

**8000T**  
SERIES  
TUSCANY

*Horizontal View*



Scale: 6" = 1' (1/2 scale)

*Due to continual product research and development, details may be changed at any time. ©2008  
Products shown are not available at all locations – confirm availability with your local Milgard representative.*

**8000T COMBO-8  
NOVEMBER 2008**

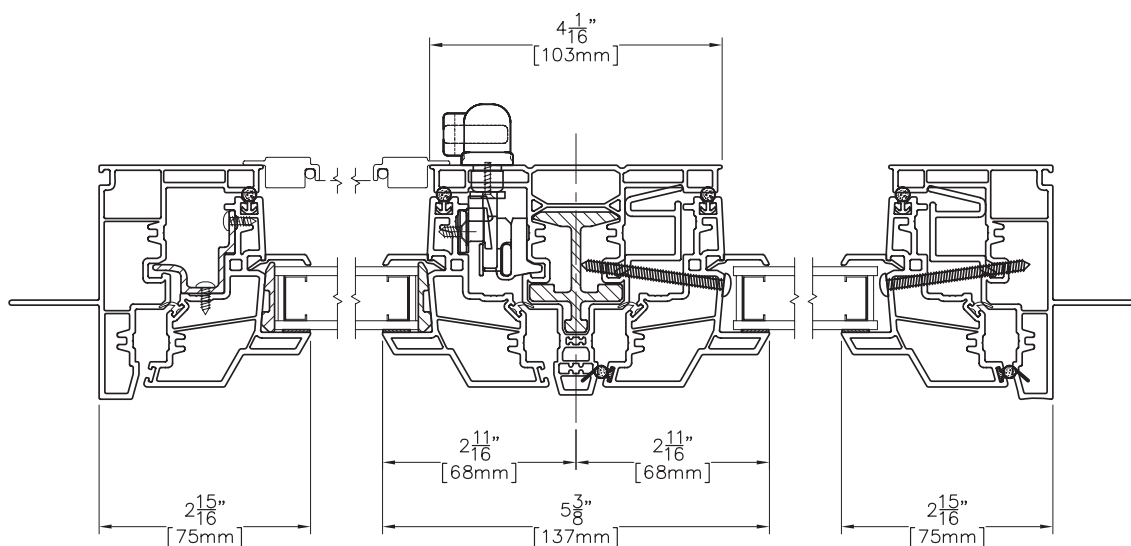


# Assembly Drawing:

IMR 8520 Single Casement

**8000T**  
**SERIES**  
**TUSCANY**

Horizontal View



Scale: 6" = 1' (1/2 scale)

8000T COMBO-9  
NOVEMBER 2008

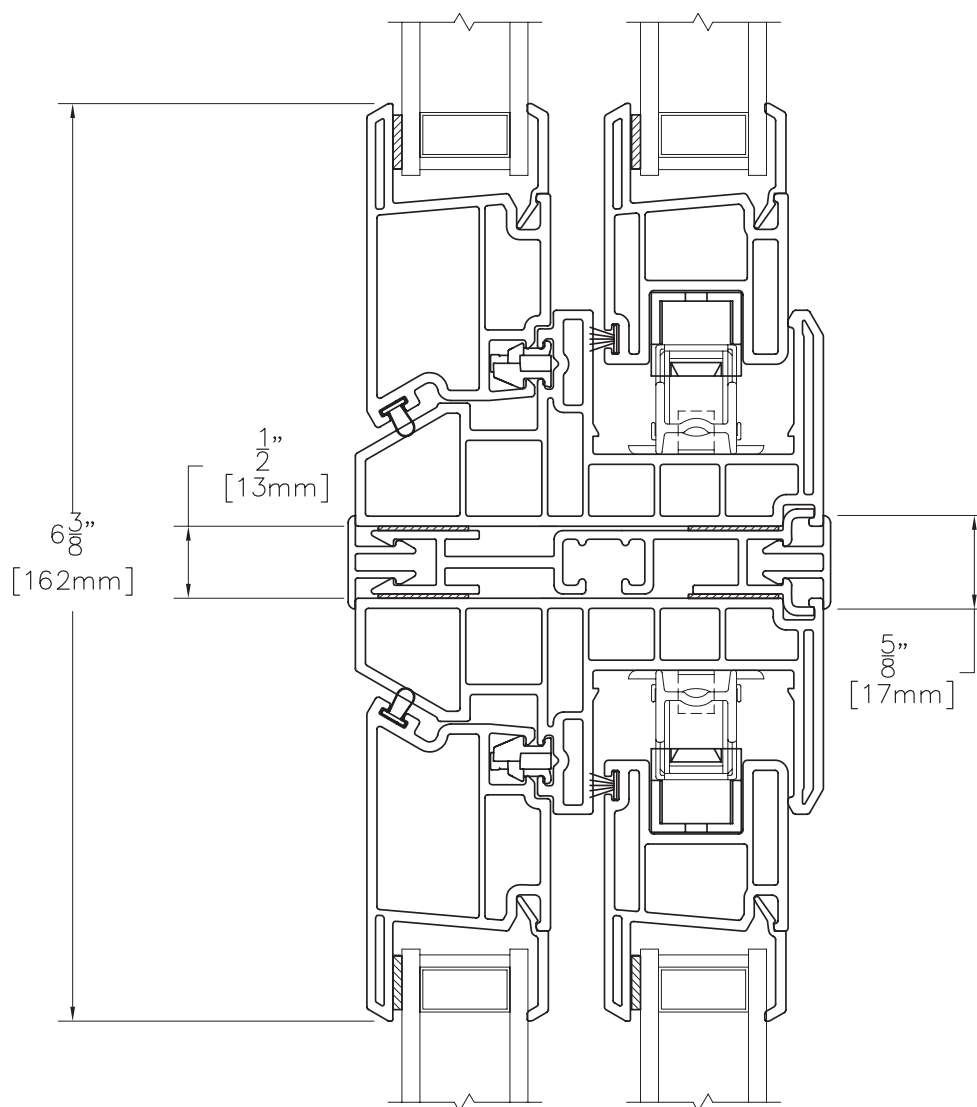
*Due to continual product research and development, details may be changed at any time. ©2008  
Products shown are not available at all locations – confirm availability with your local Milgard representative.*

# Assembly Drawing:

MULL 8120 8120

**8000T**  
SERIES  
TUSCANY

*Vertical View*



Scale: 6" = 1' (1/2 scale)

*Due to continual product research and development, details may be changed at any time. ©2008  
Products shown are not available at all locations – confirm availability with your local Milgard representative.*

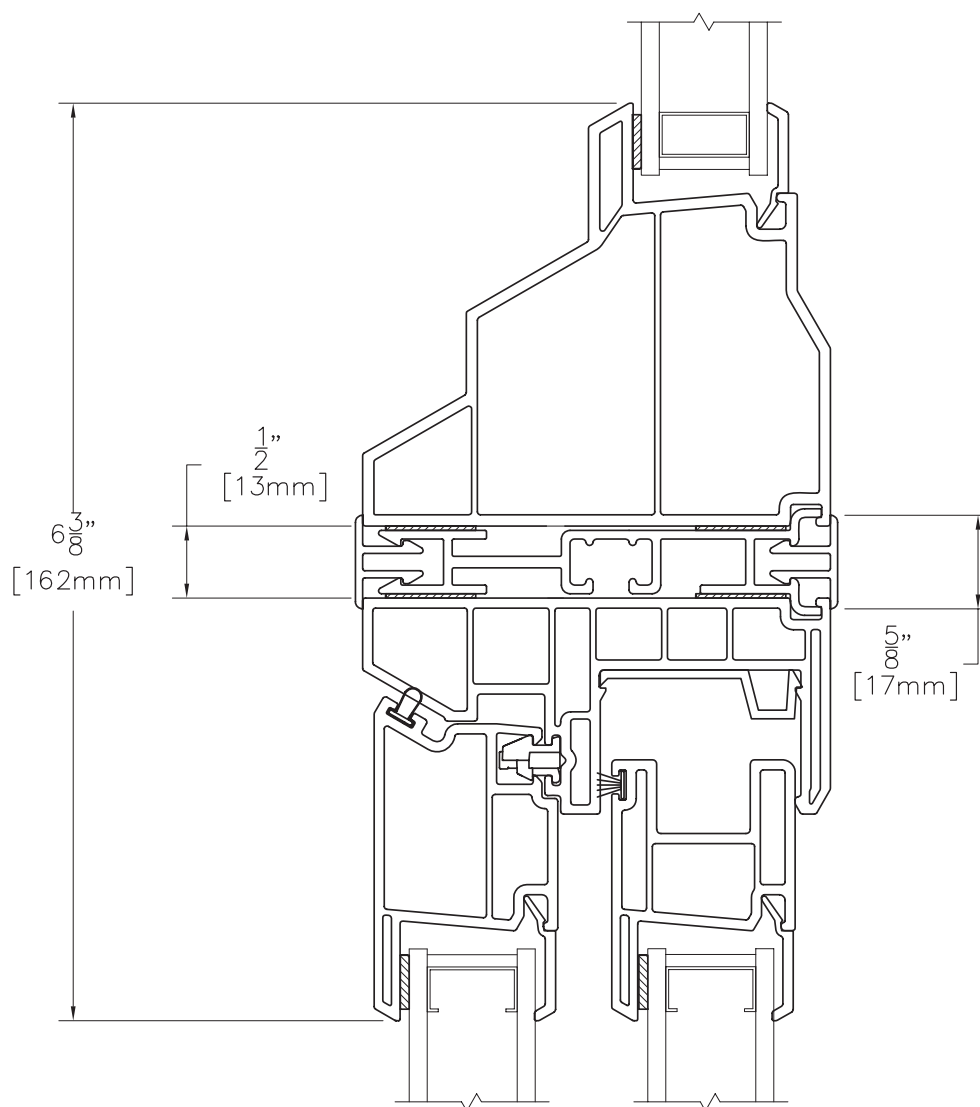
**8000T COMBO-10  
NOVEMBER 2008**

# Assembly Drawing:

MULL 8120 8320

**8000T**  
SERIES  
TUSCANY

*Vertical View*



Scale: 6" = 1' (1/2 scale)

8000T COMBO-11  
NOVEMBER 2008

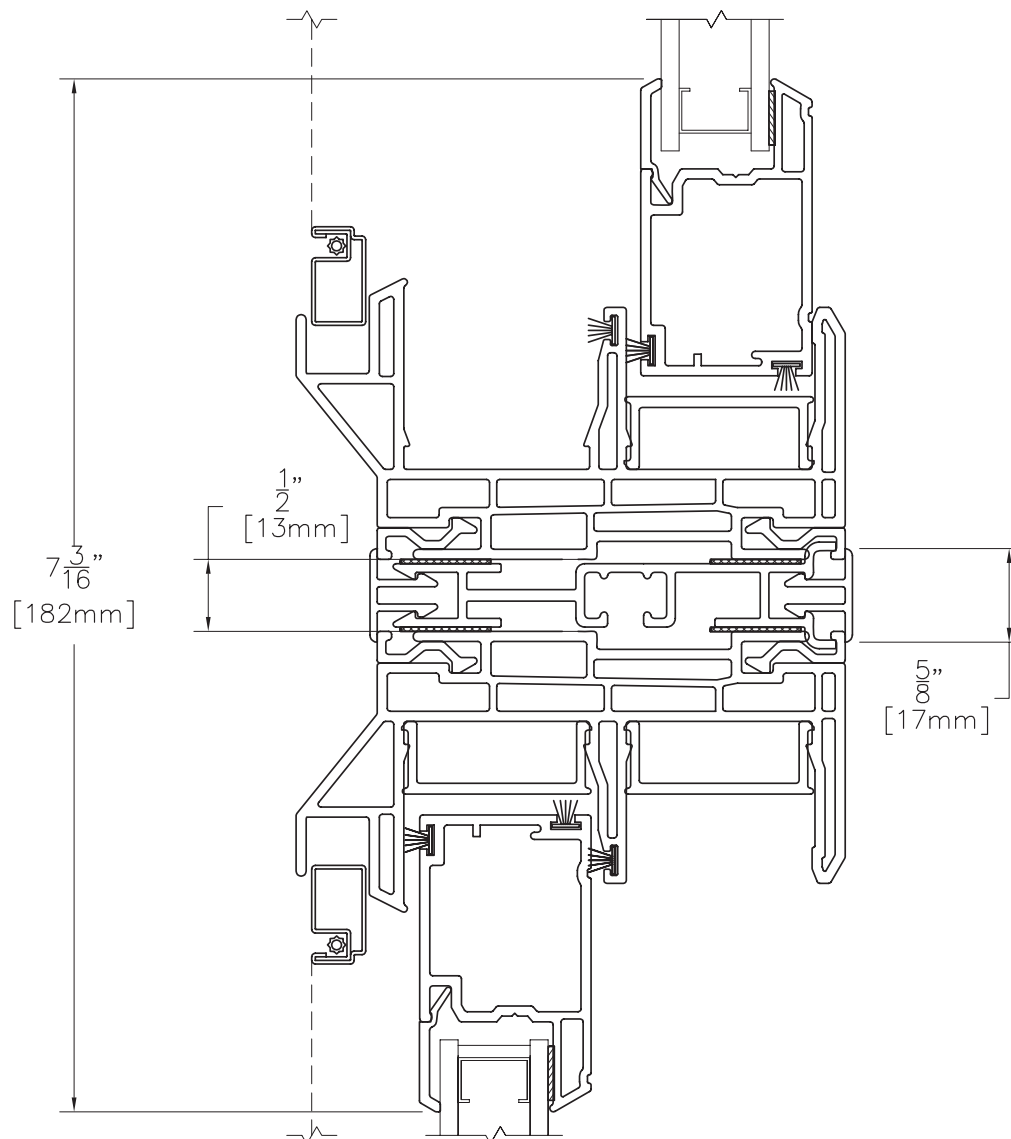
*Due to continual product research and development, details may be changed at any time. ©2008  
Products shown are not available at all locations – confirm availability with your local Milgard representative.*

# Assembly Drawing:

MULL 8125 8125

**8000T**  
SERIES  
TUSCANY

Vertical View



Scale: 6" = 1' (1/2 scale)

Due to continual product research and development, details may be changed at any time. ©2008  
Products shown are not available at all locations – confirm availability with your local Milgard representative.

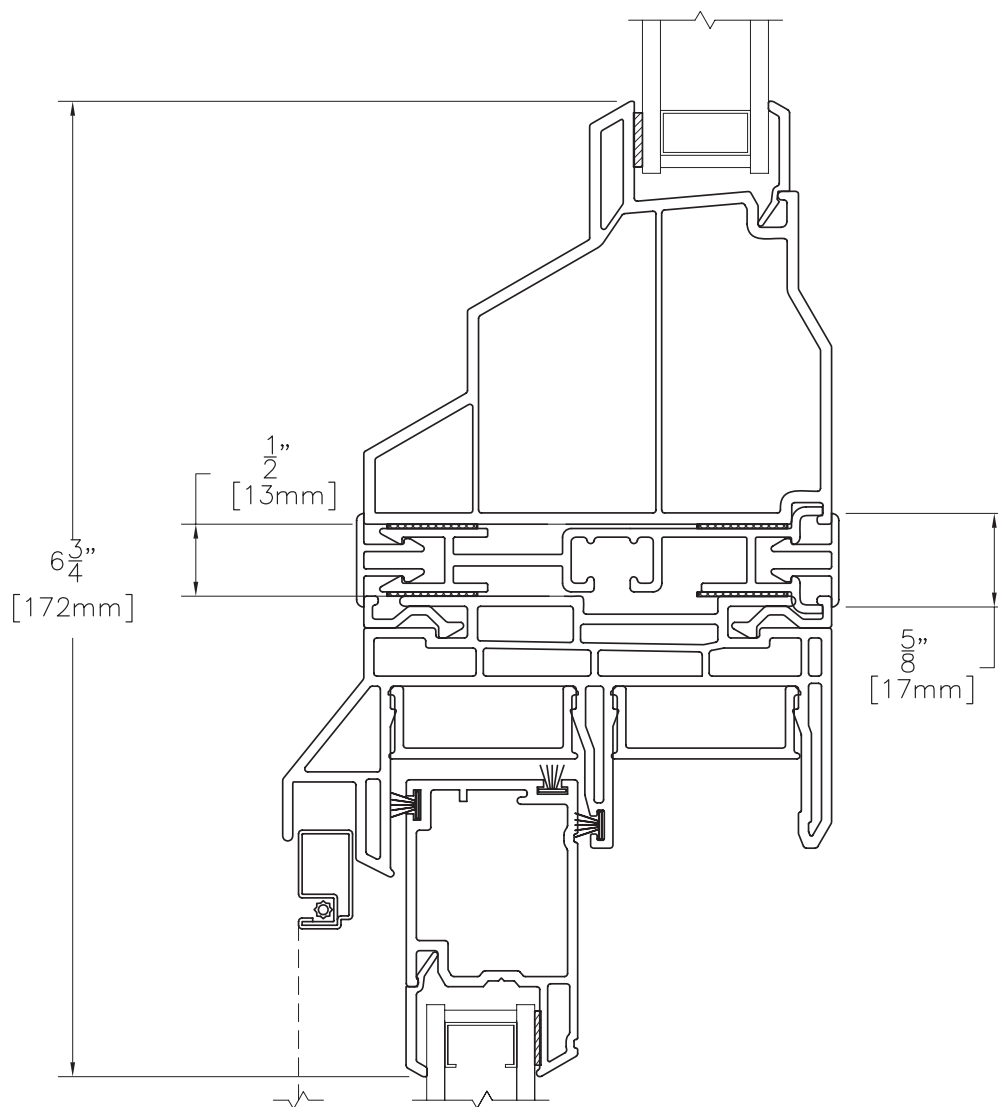
**8000T COMBO-12**  
**NOVEMBER 2008**

# Assembly Drawing:

MULL 8125 8320

**8000T**  
SERIES  
TUSCANY

*Vertical View*



Scale: 6" = 1' (1/2 scale)

8000T COMBO-13  
NOVEMBER 2008

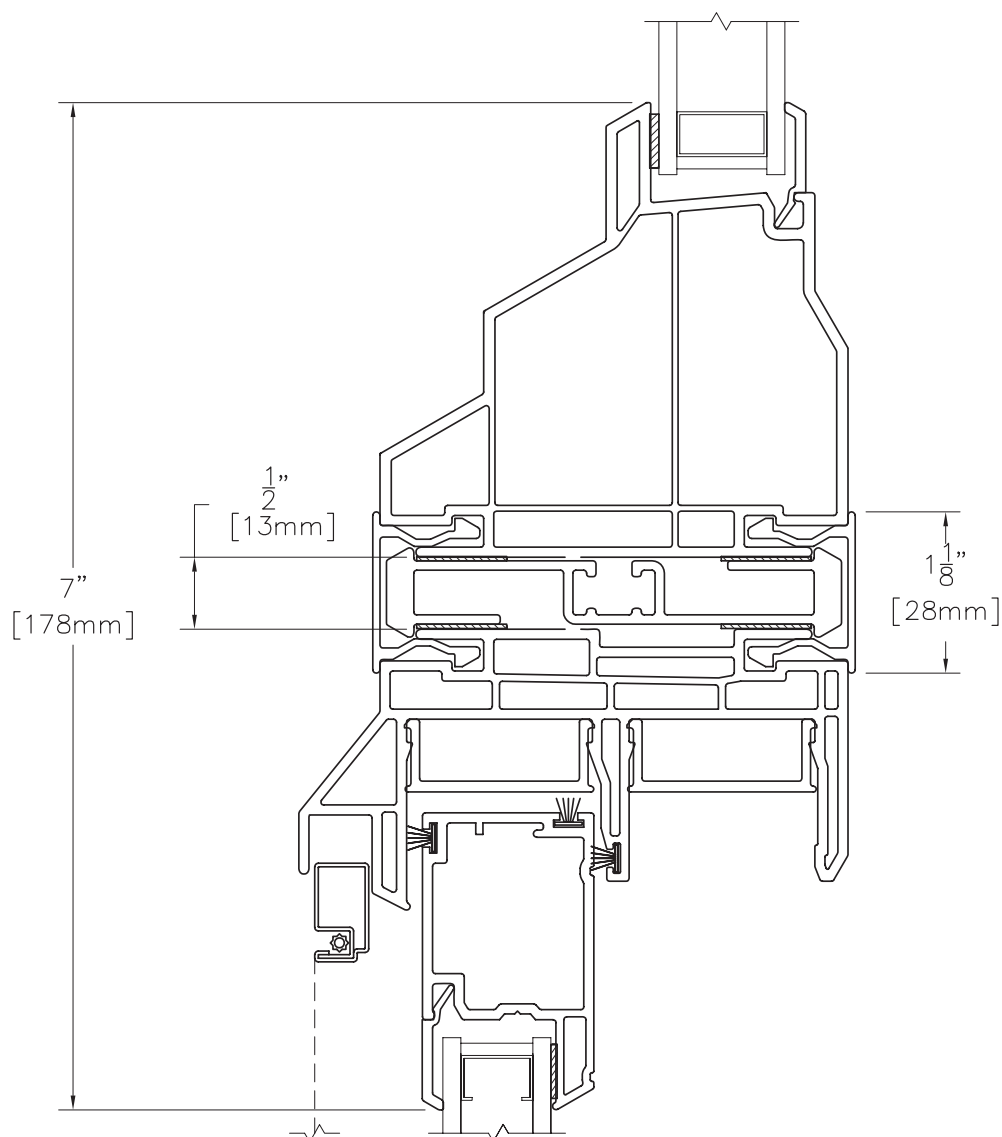
*Due to continual product research and development, details may be changed at any time. ©2008  
Products shown are not available at all locations – confirm availability with your local Milgard representative.*

# Assembly Drawing:

MULL 8125 8340

**8000T**  
SERIES  
TUSCANY

*Vertical View*



Scale: 6" = 1' (1/2 scale)

*Due to continual product research and development, details may be changed at any time. ©2008  
Products shown are not available at all locations – confirm availability with your local Milgard representative.*

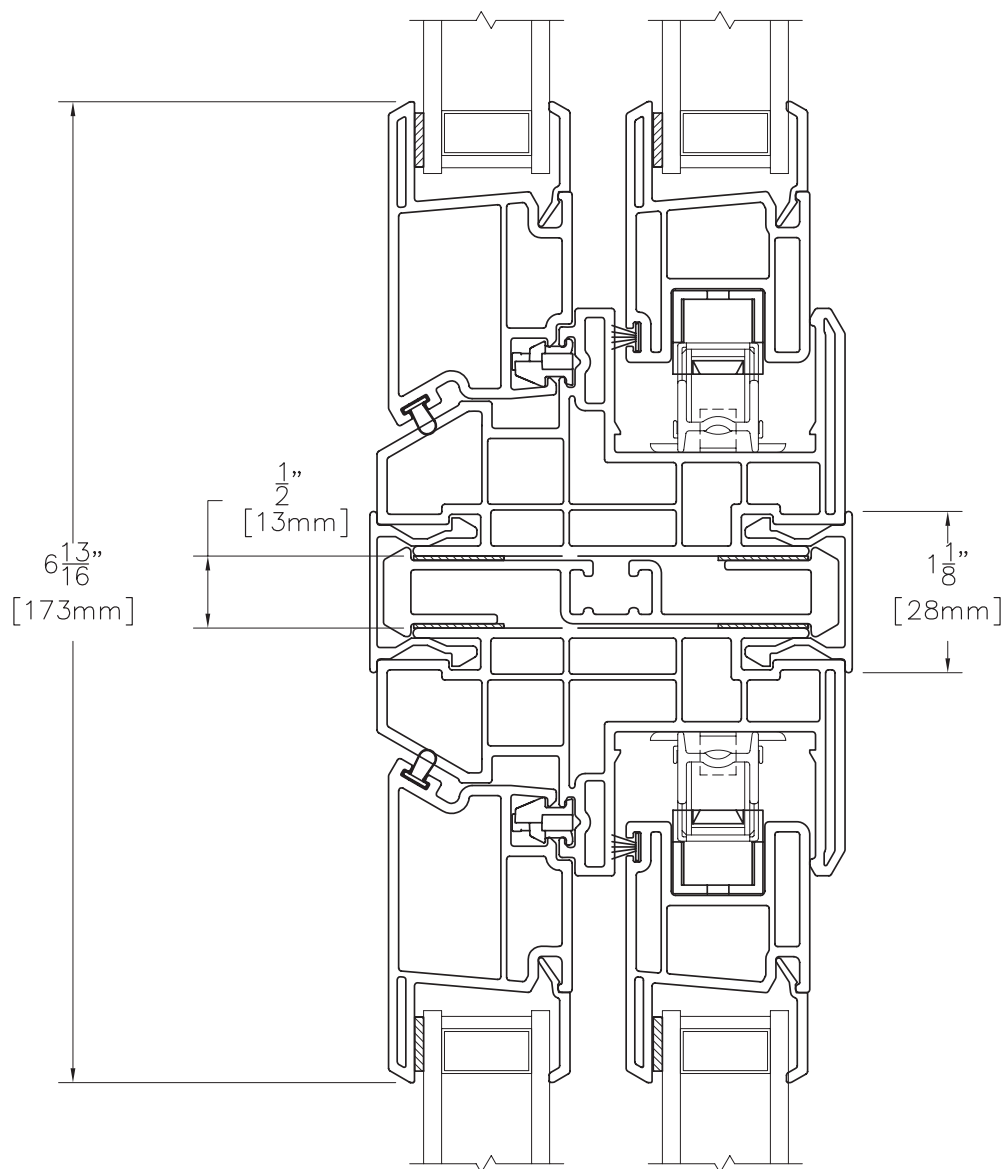
**8000T COMBO-14**  
**NOVEMBER 2008**

# Assembly Drawing:

MULL 8140 8140

**8000T**  
SERIES  
TUSCANY

Vertical View



Scale: 6" = 1' (1/2 scale)

8000T COMBO-15  
NOVEMBER 2008

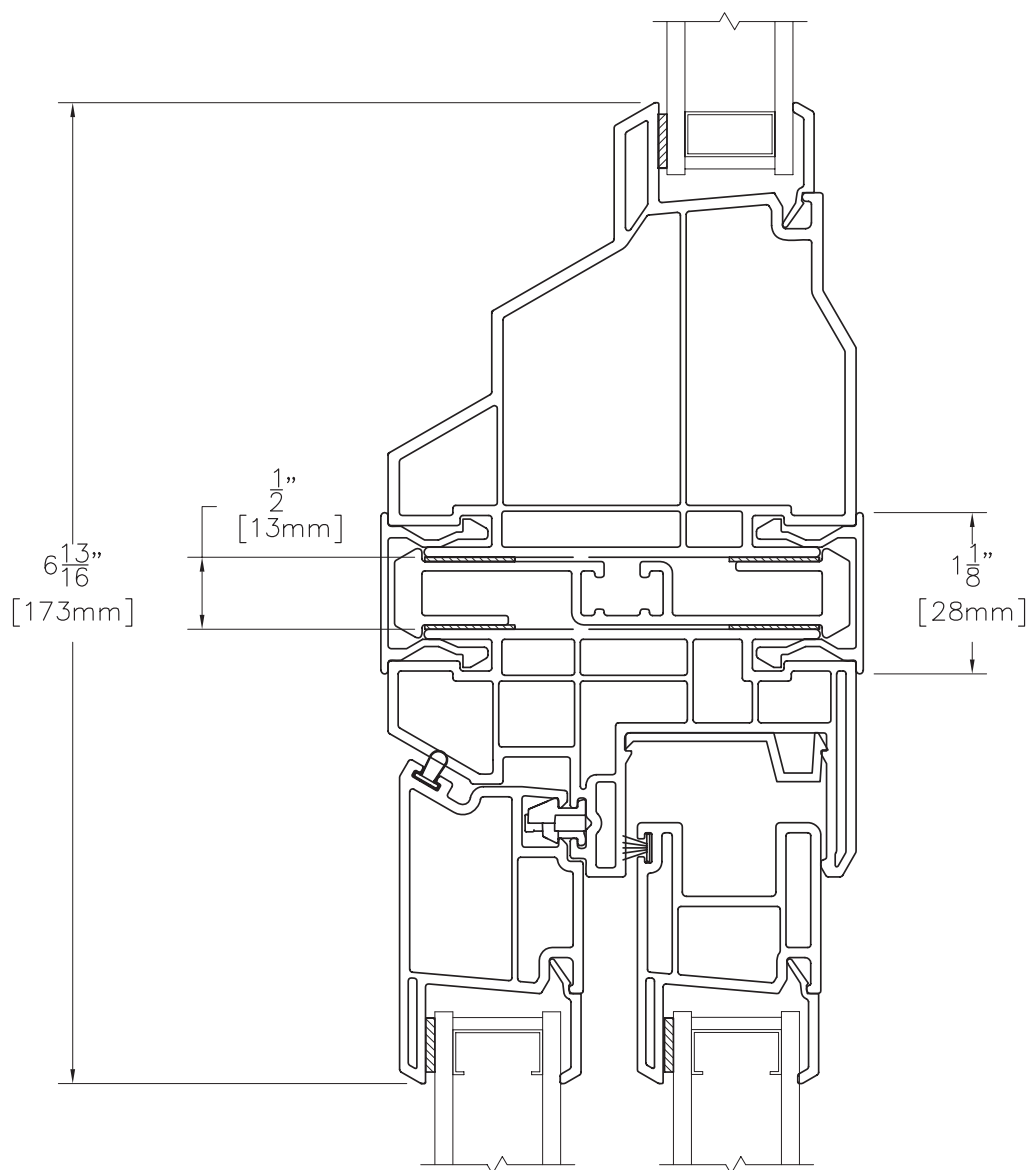
*Due to continual product research and development, details may be changed at any time. ©2008  
Products shown are not available at all locations – confirm availability with your local Milgard representative.*

# Assembly Drawing:

MULL 8140 8340

**8000T**  
SERIES  
TUSCANY

*Vertical View*



Scale: 6" = 1' (1/2 scale)

*Due to continual product research and development, details may be changed at any time. ©2008  
Products shown are not available at all locations – confirm availability with your local Milgard representative.*

**8000T COMBO-16  
NOVEMBER 2008**

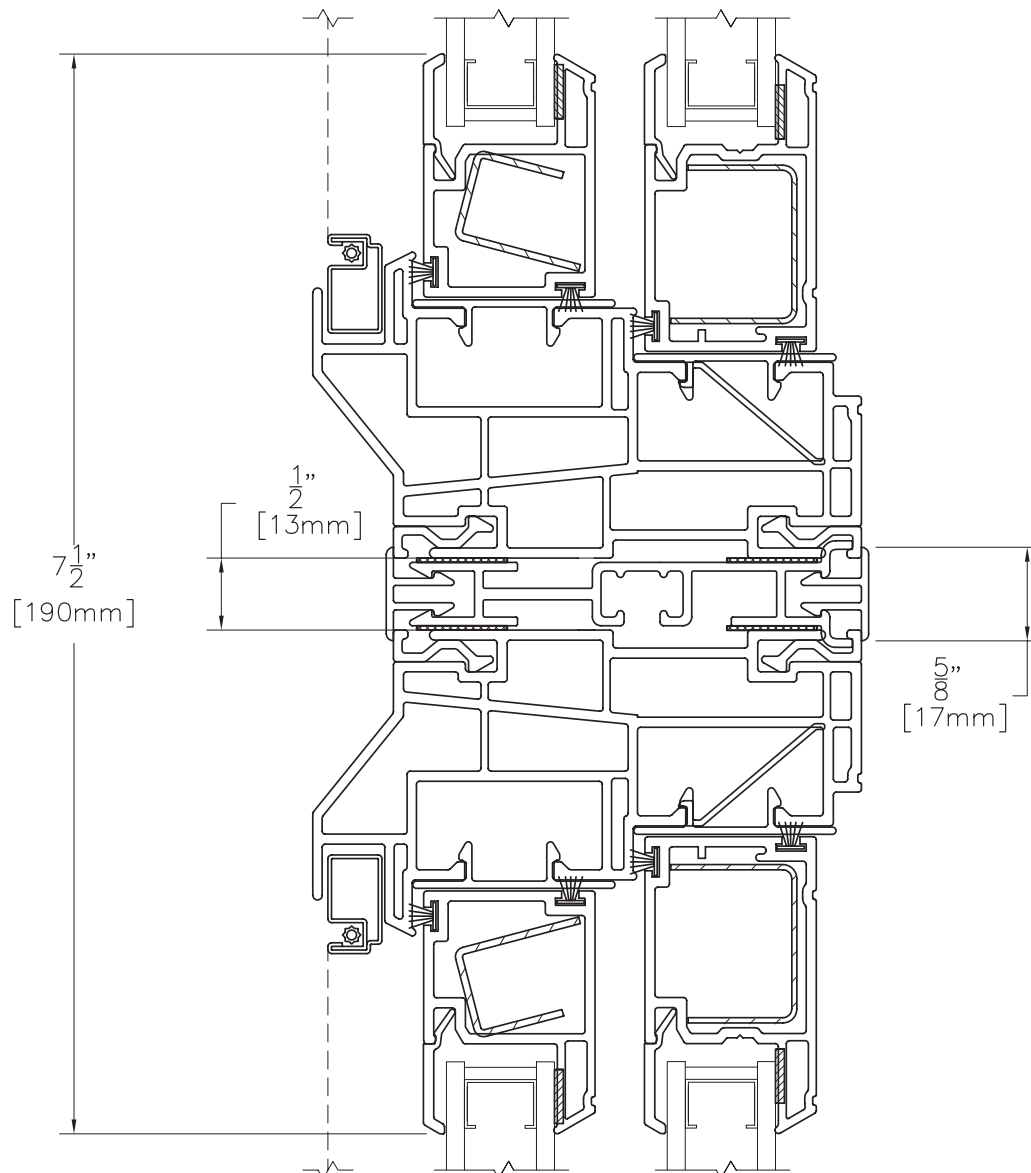


# Assembly Drawing:

MULL 8225 8225

**8000T**  
**SERIES**  
**TUSCANY**

Vertical View



Scale: 6" = 1' (1/2 scale)

**8000T COMBO-17**  
**NOVEMBER 2008**

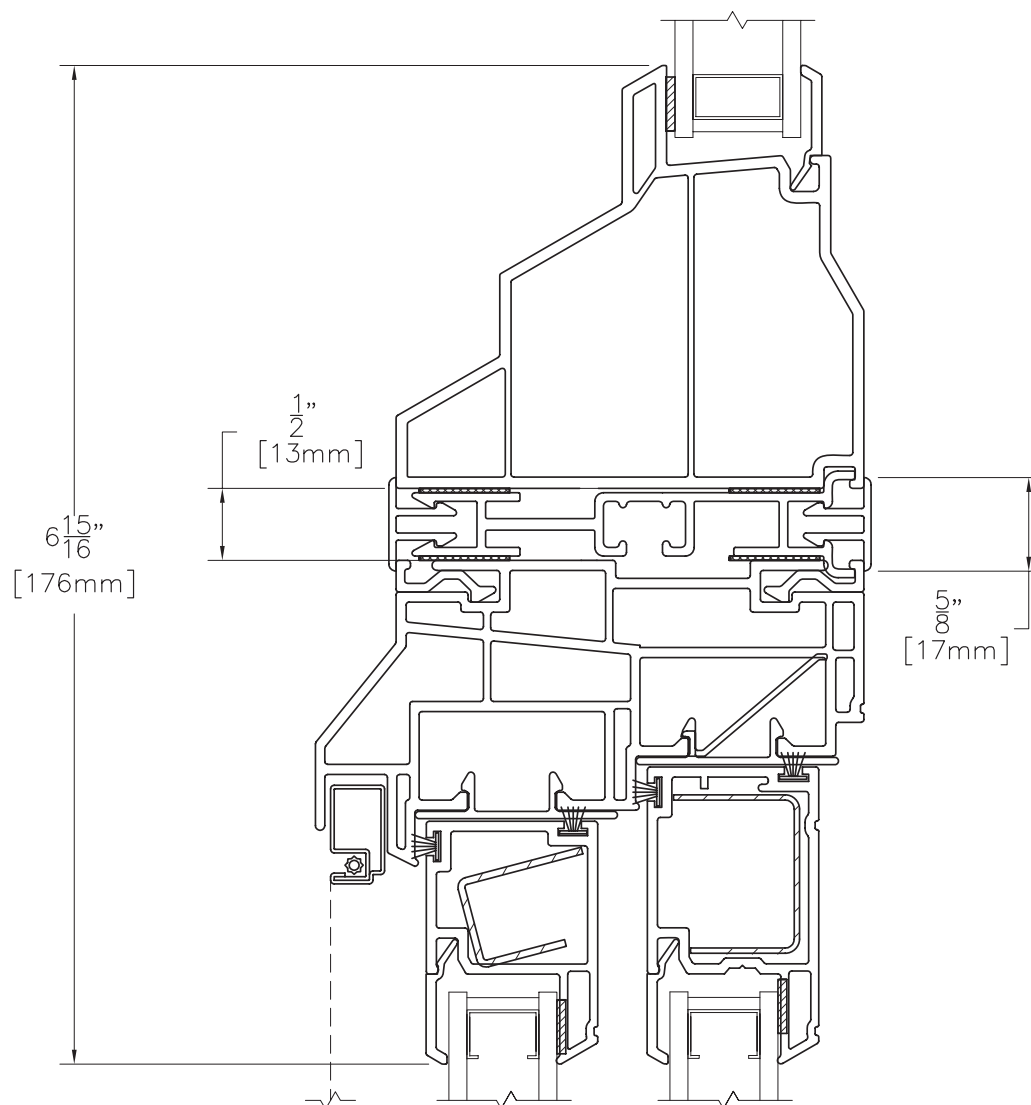
*Due to continual product research and development, details may be changed at any time. ©2008  
Products shown are not available at all locations – confirm availability with your local Milgard representative.*

# Assembly Drawing:

MULL 8225 8320

**8000T**  
SERIES  
TUSCANY

*Vertical View*



Scale: 6" = 1' (1/2 scale)

*Due to continual product research and development, details may be changed at any time. ©2008  
Products shown are not available at all locations – confirm availability with your local Milgard representative.*

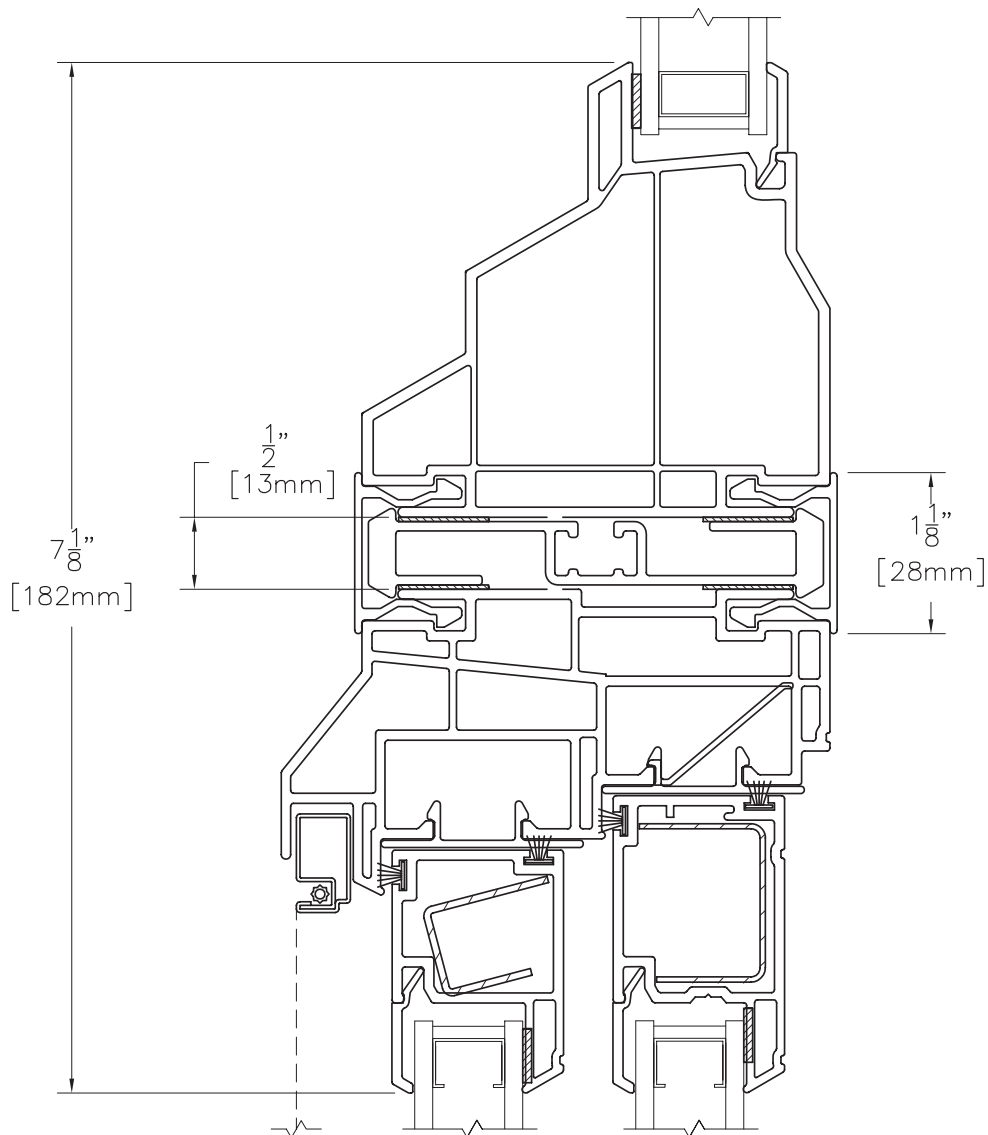
**8000T COMBO-18**  
**NOVEMBER 2008**

# Assembly Drawing:

MULL 8225 8340

**8000T**  
SERIES  
TUSCANY

*Vertical View*



Scale: 6" = 1' (1/2 scale)

8000T COMBO-19  
NOVEMBER 2008

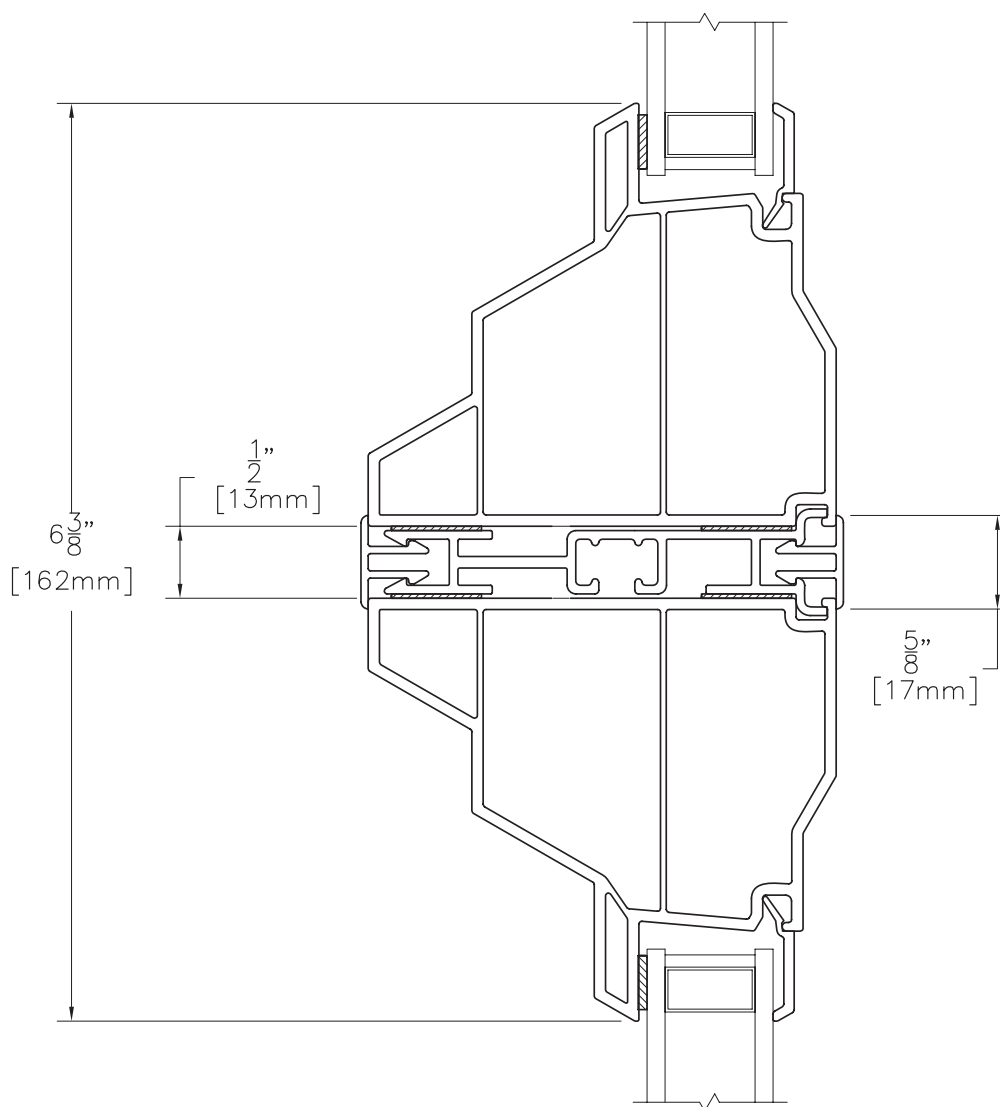
*Due to continual product research and development, details may be changed at any time. ©2008  
Products shown are not available at all locations – confirm availability with your local Milgard representative.*

# Assembly Drawing:

MULL 8320 8320

**8000T**  
SERIES  
TUSCANY

*Vertical View*



Scale: 6" = 1' (1/2 scale)

*Due to continual product research and development, details may be changed at any time. ©2008  
Products shown are not available at all locations – confirm availability with your local Milgard representative.*

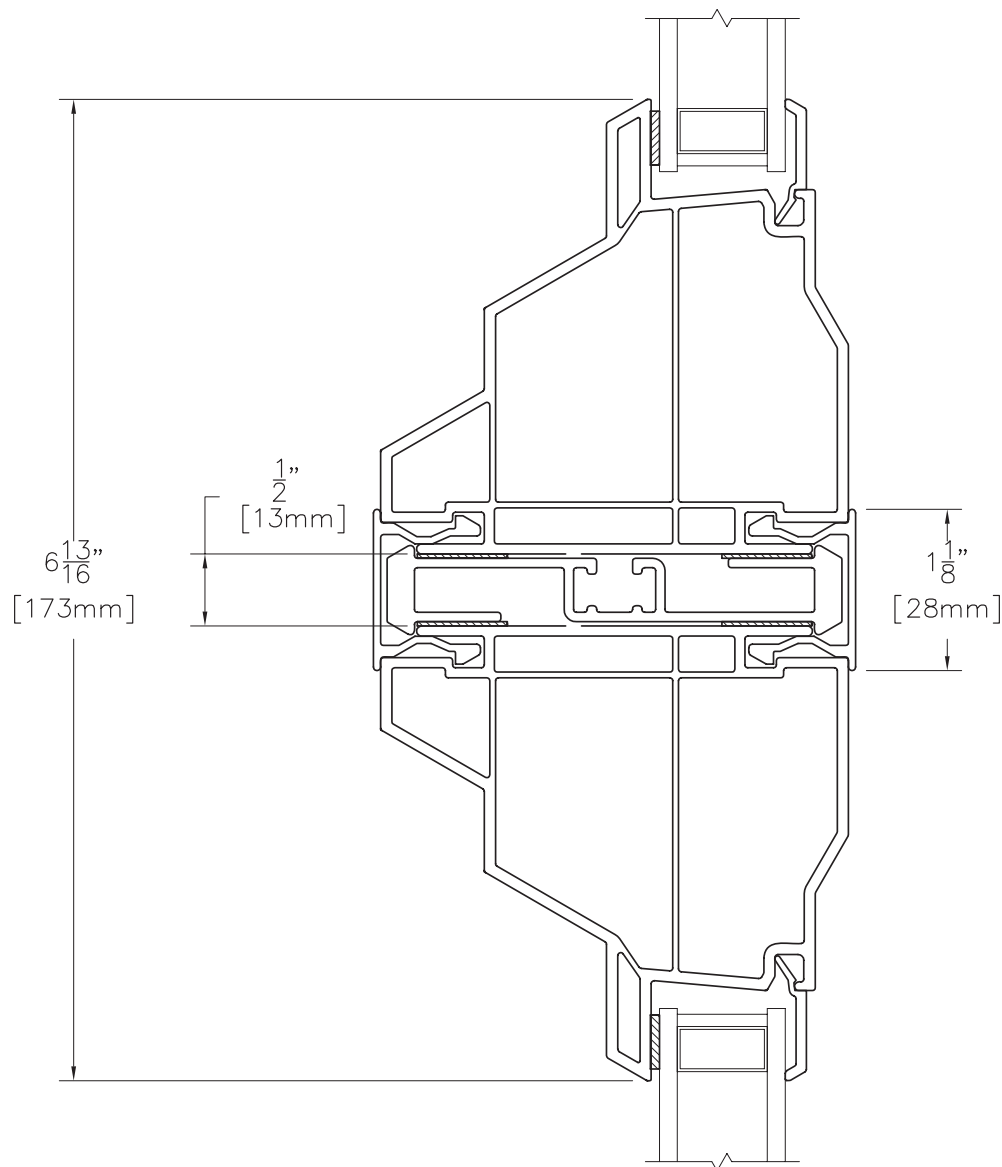
**8000T COMBO-20  
NOVEMBER 2008**

# Assembly Drawing:

MULL 8340 8340

**8000T**  
**SERIES**  
**TUSCANY**

*Vertical View*



Scale: 6" = 1' (1/2 scale)

8000T COMBO-21  
NOVEMBER 2008

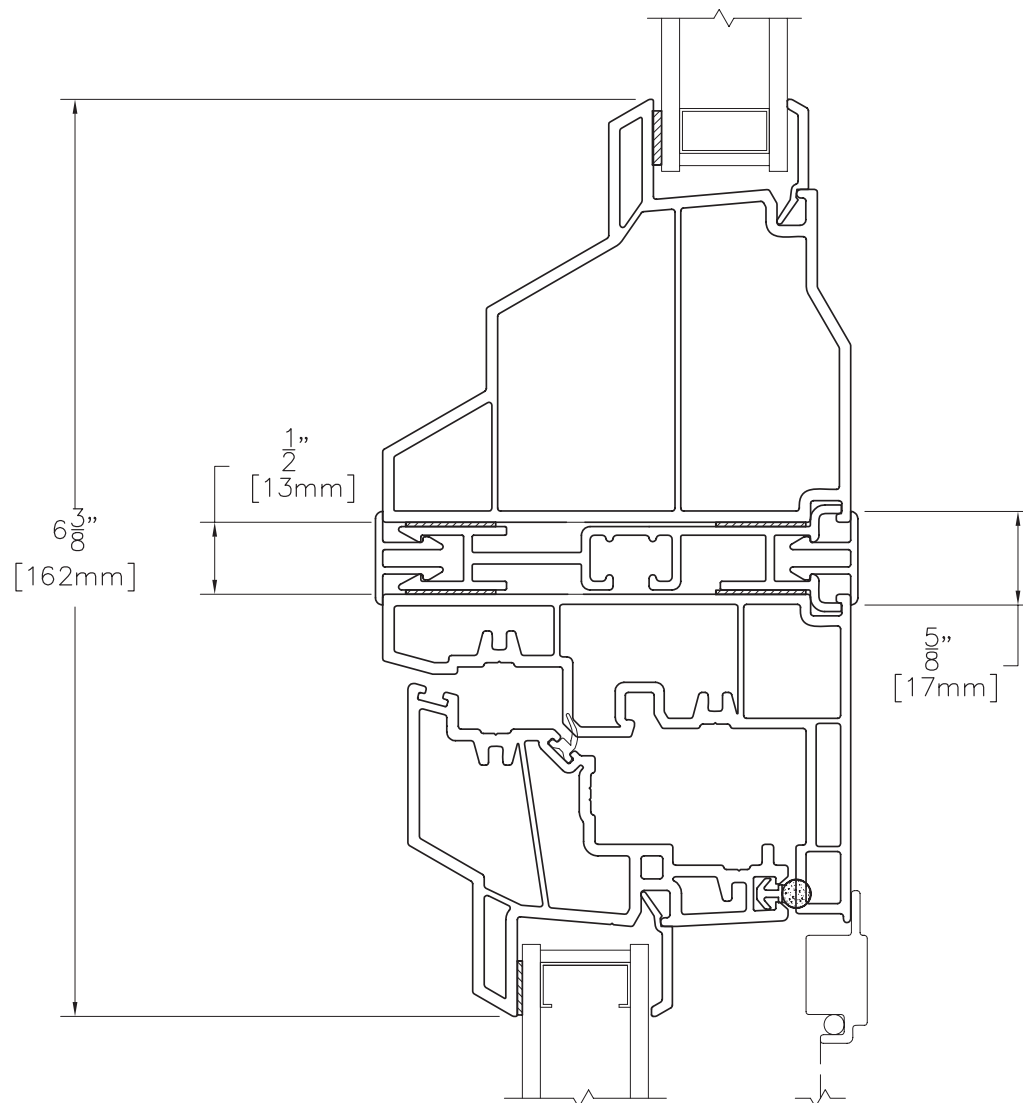
*Due to continual product research and development, details may be changed at any time. ©2008  
Products shown are not available at all locations – confirm availability with your local Milgard representative.*

# Assembly Drawing:

MULL 8420 8320

**8000T**  
SERIES  
TUSCANY

*Vertical View*



Scale:  $6" = 1'$  (1/2 scale)

*Due to continual product research and development, details may be changed at any time. ©2008  
Products shown are not available at all locations – confirm availability with your local Milgard representative.*

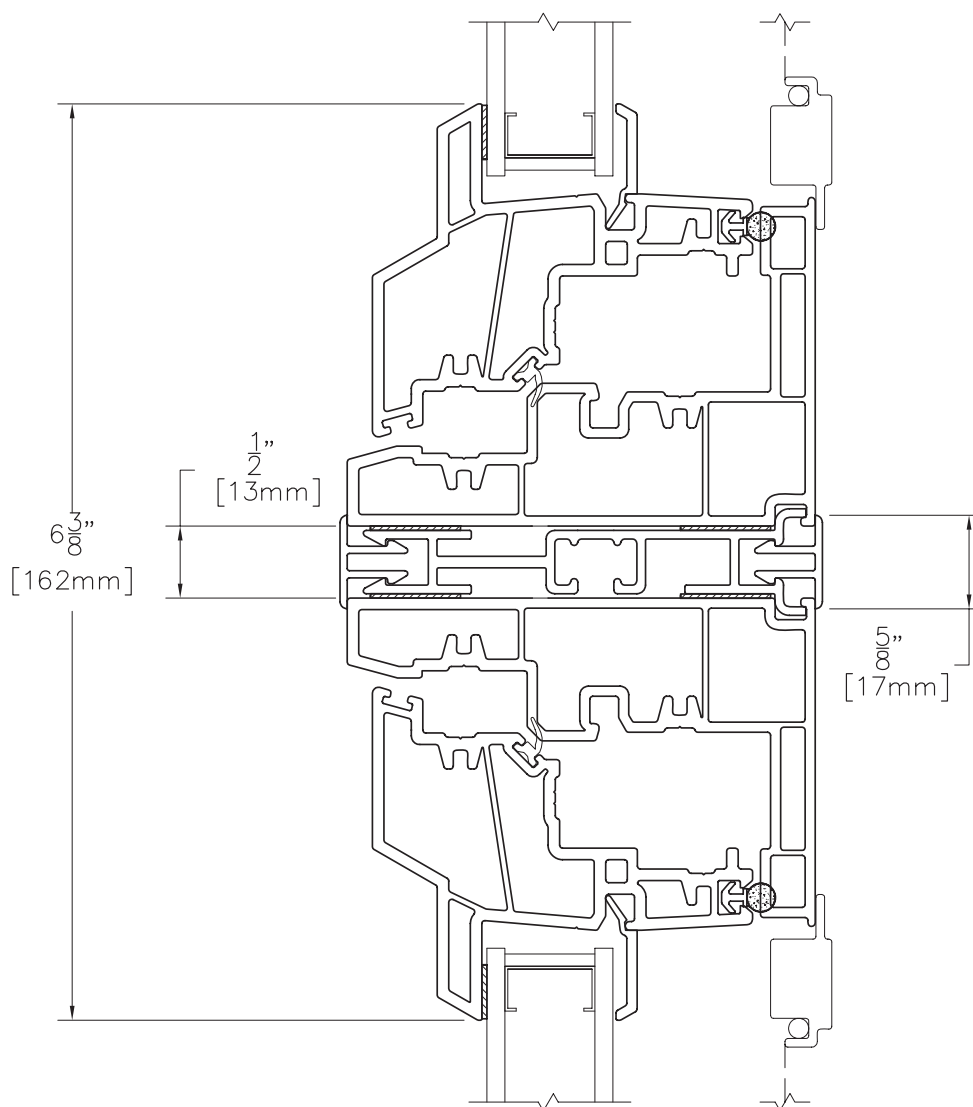
**8000T COMBO-22  
NOVEMBER 2008**

# Assembly Drawing:

MULL 8420 8420

**8000T**  
SERIES  
TUSCANY

Vertical View



Scale: 6" = 1' (1/2 scale)

8000T COMBO-23  
NOVEMBER 2008

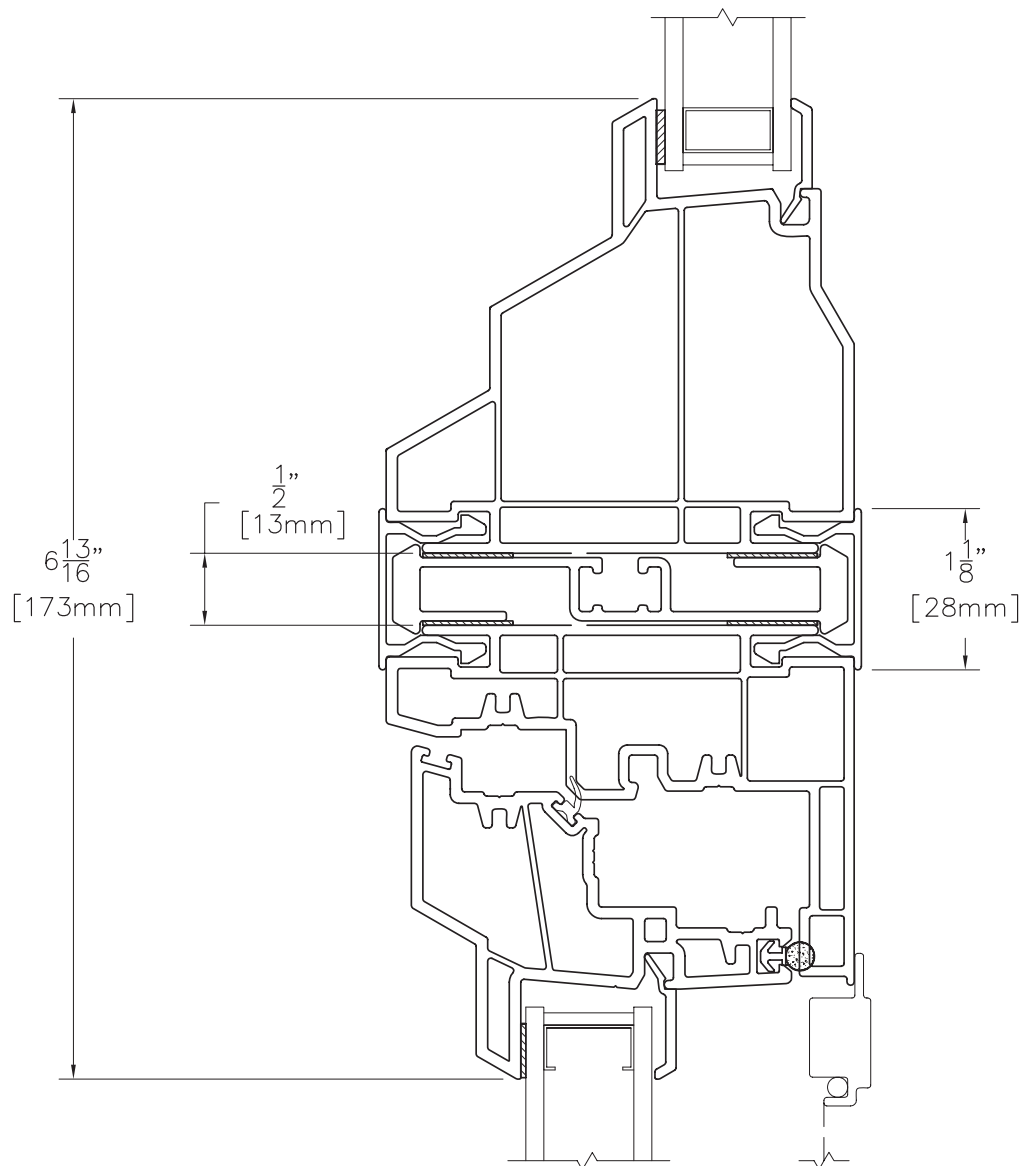
*Due to continual product research and development, details may be changed at any time. ©2008  
Products shown are not available at all locations – confirm availability with your local Milgard representative.*

# Assembly Drawing:

MULL 8440 8340

**8000T**  
SERIES  
TUSCANY

*Vertical View*



Scale: 6" = 1' (1/2 scale)

*Due to continual product research and development, details may be changed at any time. ©2008  
Products shown are not available at all locations – confirm availability with your local Milgard representative.*

**8000T COMBO-24  
NOVEMBER 2008**

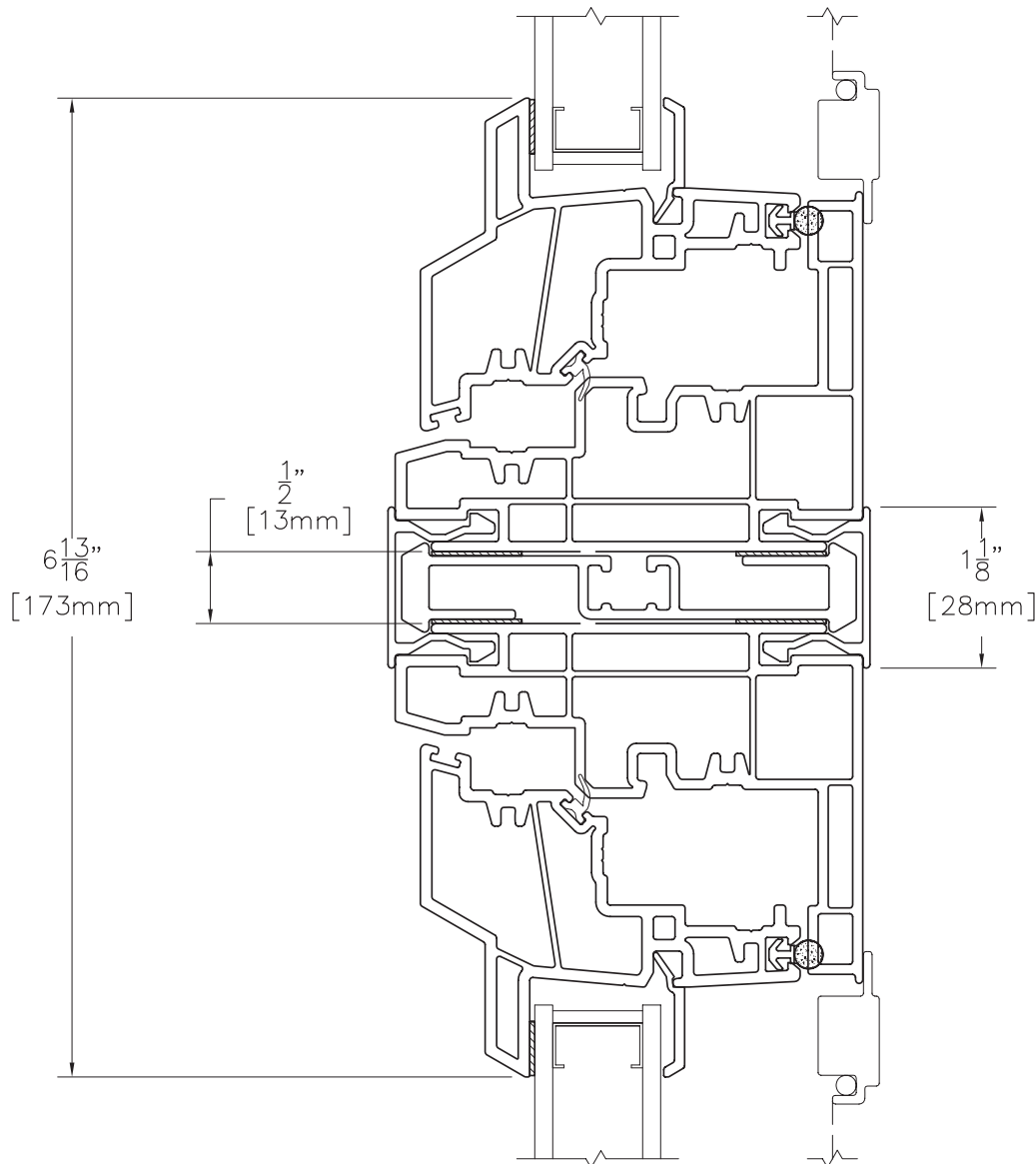


# Assembly Drawing:

MULL 8440 8440

**8000T**  
SERIES  
TUSCANY

*Vertical View*



Scale: 6" = 1' (1/2 scale)

8000T COMBO-25  
NOVEMBER 2008

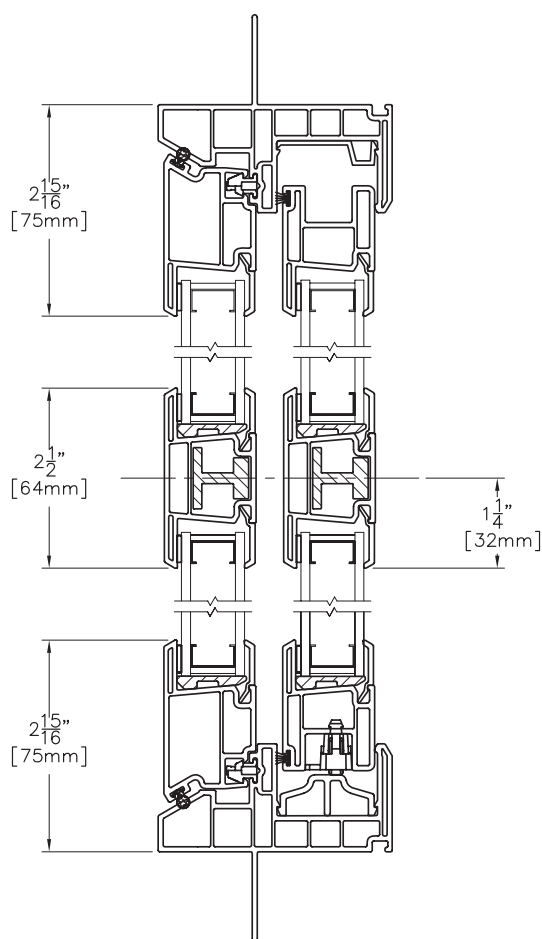
*Due to continual product research and development, details may be changed at any time. ©2008  
Products shown are not available at all locations – confirm availability with your local Milgard representative.*

# Assembly Drawing:

TDL 8120 Half Vent

**8000T**  
SERIES  
TUSCANY

*Vertical View*



Scale: 6" = 1' (1/2 scale)

*Due to continual product research and development, details may be changed at any time. ©2008  
Products shown are not available at all locations – confirm availability with your local Milgard representative.*

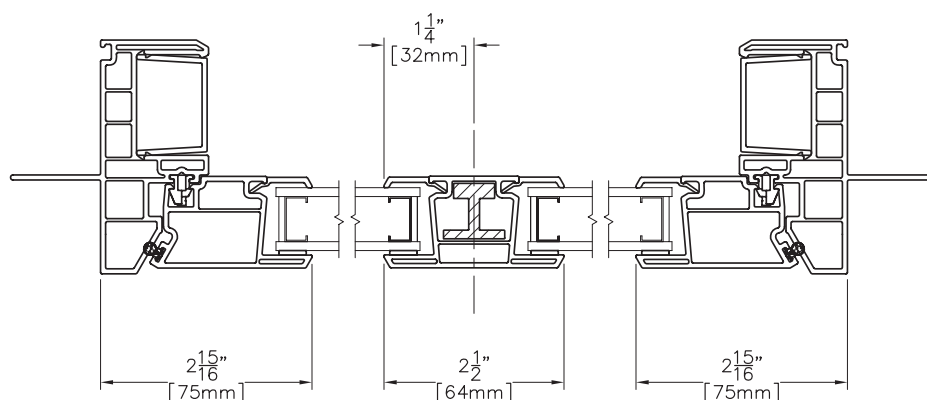
**8000T COMBO-26  
NOVEMBER 2008**

# Assembly Drawing:

TDL 8220 Picture Window

**8000T**  
**SERIES**  
**TUSCANY**

*Horizontal View*



Scale: 6" = 1' (1/2 scale)